

CORAL

SEA SOFTSWITCH

multimedia communications

**Complete VoIP solutions
for all size enterprises**



Tadiran Telecom



SMALL BOX, BIG CAPABILITIES!

Multimedia Communications Solution

Tadiran Telecom's all new Sea Softswitch. A complete VoIP solution that requires only 1U of rack space, yet has capabilities far greater than much larger systems.

- Pure IP
- Distributed system - no "clustering"
- Fault-tolerant by design
- SIP-based Unified Messaging included
- Speech Recognition, IVR, Contact Center.. it's all in there



The Sea Softswitch is based on a completely new distributed architecture. We took our years of experience with PBX and VoIP and started with a clean slate. No compromises. No legacy constraints. No more networking of sites. One site or one thousand sites. One softswitch server PC or one thousand servers - either way and you have a single, replicated, fault-tolerant solution. Easy to administer and upgrade. The new Sea Softswitch is based on open standards. Do you prefer Linux or Windows? CSTA, SIP, MGCP, LDAP of course. Choose one of our SIP phones or any brand you like. The Sea Softswitch, a small box with big capabilities.

CORAL

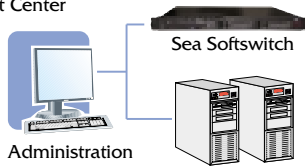
Applications Scenarios



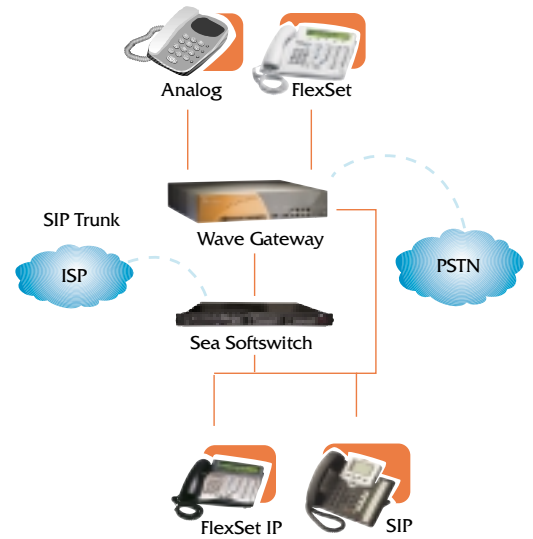
Distributed or Enterprise - with its ability to join geographically dispersed satellite offices, the Sea Softswitch is the perfect platform to provide seamless communications and a single point of administration.

ISP/ASP Applications

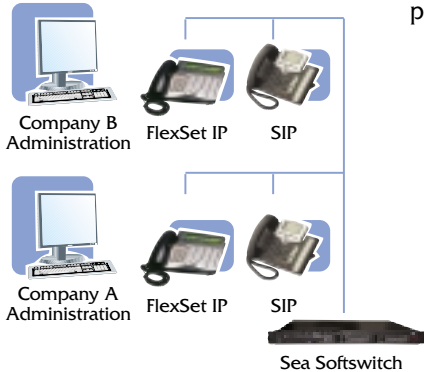
Enterprise Telephony
Billing
Messaging
Contact Center
CRM



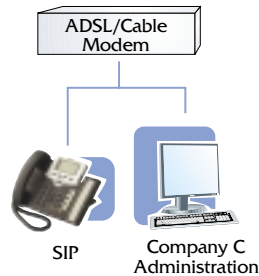
Co-Hosted Solution - the buzz word in telecommunications today is "hosted" solutions. One issue hosted solutions can not overcome is redundancy or latency of the last mile. The Sea Softswitch overcomes this obstacle by allowing a local processing engine to be located on the customer premise. The database for the customer is housed in the central NOC as well as on the customer premise. In case of a network failure the local Sea processing engine takes over and processes calls seamlessly.



Office Building



Office Building



Standalone (SME) - the Sea Softswitch combined with Coral Wave Gateway and/or standard SIP FXS and SIP FXO adaptors give small growing business the communication tools that are cost effective and feature rich today while providing limitless expansion for the future.

Features / Benefits

Open Standards

The Sea Softswitch is a pure IP system that provides flexibility and compatibility by supporting industry standards.

- CSTA, SIP, LDAP, MGCP, SQL
- Standard database
- Operating system independent - Linux and Windows
- Third party SIP endpoints/trunks and gateways are supported
- Third party MGCP advanced-featured IP telephones and gateways are supported

Management

Designed from an administrator's perspective, the Sea Softswitch Admin is based on innovative principles of management.

- Saves time, truly integrated administration
- Shortens end-user wait time for change requests
- Empowers the end-user to manage their settings
- Integrates VM, Phone, ACD, Contact Center, and third-party devices
- Provides more controls with intuitive and complete GUI design
- Administrator makes the right decisions based on real-time information
- Less dependency on outside vendors (MAC - moves, adds and changes can be handled internally)
- Simpler management of multiple sites
- Single point of administration for all users no matter of location
- Single licensing management
- Concurrent administrators
- Time zone setting per site; all time based activities are reported in local time

User Centric

The Sea Softswitch is designed around the concept of the user rather than a device or extension. This allows the system to provide applications that match a user's changing needs.

- Increases control to each user
- Allows multiple devices, aliases, schedules, and routing rules
- Simplifies work flow and saves time by using a single message inbox per user regardless of the number of devices.
- Allows the organization to bill based on the "user" rather than billing based an extension or line
- Saves user time with an easy-to-setup graphical interface
- Enables changes from anywhere
- Presence allows the user to be better informed of the status of others
- Users can be reached based on personal or business rules

Redundancy

By design the Sea Softswitch has identical information on all servers so that services can be provided by any server to any user.

- Each server (or site) is a live backup for all the others
- Fault tolerant by design
- Site can operate without connection to other sites, a "Survivable Remote" in the case where the WAN connection is lost

Applications

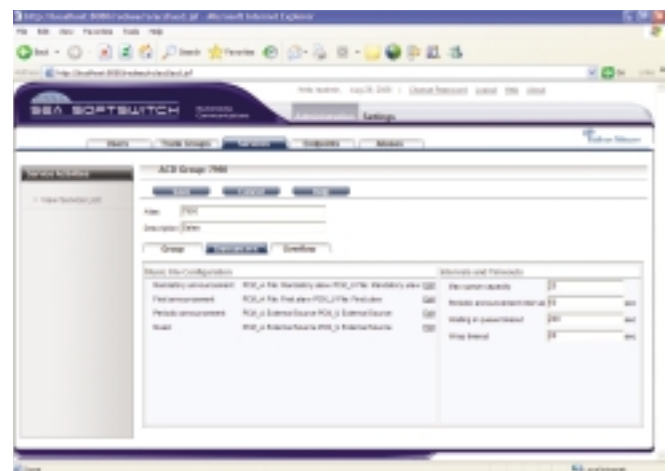
The Sea Softswitch is essentially a communications services platform capable of providing a variety of optional applications.

- ACD agents can be located anywhere on any site without compromising the reporting mechanism
- The unified messaging system can be in one or more locations
- Flexible conferencing resources provide a combination of simultaneous 3-way conferences and large "meet me" conference bridges
- Integrated with Tadiran's Composit Contact Pro for enhanced Contact Center applications and full real-time and historical reports.

Closed-User Groups

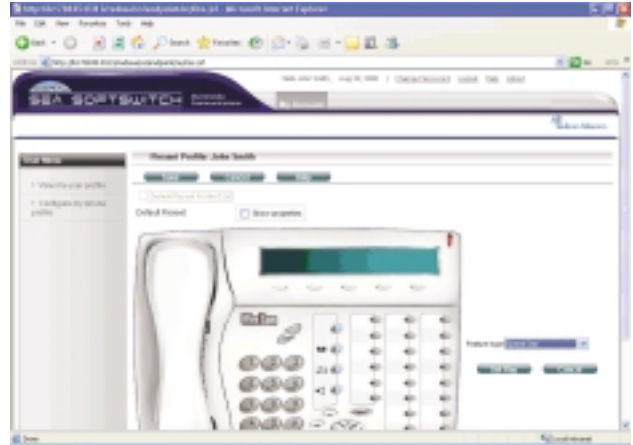
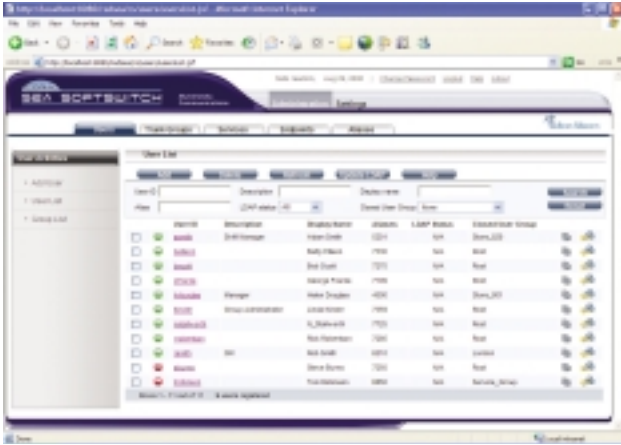
The system is designed so that everything can be departmentalized to provide a complete separation of services within a single system.

- Provides a complete virtual telephony system per group of users enabling the flexibility to share or separate resources such as attendants, circuits and other resources
- Separate management per group
- Provisions, profiles and routing rules per group
- Billing and logging can be produced per group



Administration

The Sea Softswitch utilizes web-browser administration for the convenience of users, user-group administrators, and system administrators.



T200 Series IP Telephones

The latest in Tadiran Telecom's range of advanced telephones, the T200 Series offers reliable standalone IP telephones with full functionality and excellent voice quality. Basic features include multiple call and multiple line appearance, caller ID, speed dial and call blocking, while clear LCD display and programmable keys ensure optimal ease of use. The T200 phones also include an RTP encryption feature and support Power over Ethernet (PoE) and the expansion key module.

The T200 phones can be converted from SIP to MGCP and vice versa by downloading firmware. As SIP phones, they offer all basic SIP functions such as hold, transfer and 3-way calling, plus BLF status and speed-dial keys, and provide further features via access codes. As MGCP, they support virtually all PABX features.

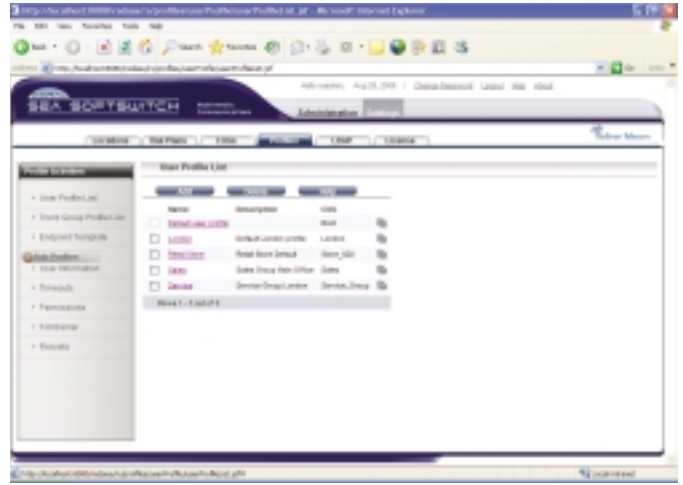
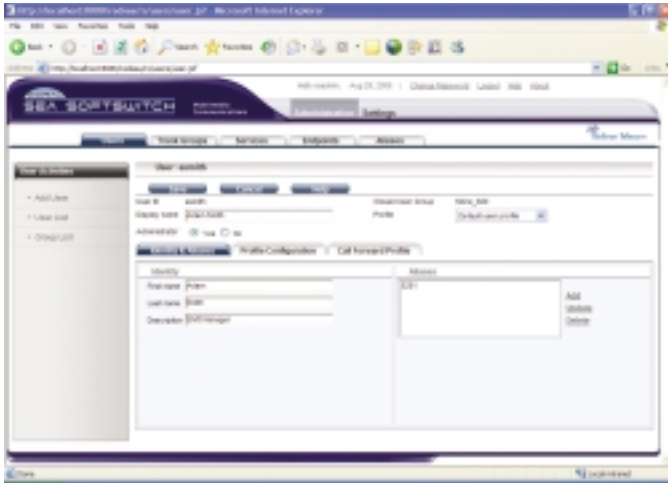


Wave Gateway

The Wave Gateway is Tadiran's access hardware option for the software-based Sea Softswitch. It provides telephony connectivity or access points to integrate the IP-based softswitch with popular telephone digital circuits such as PRI, E1, and T1 as well as analog trunks and single-line analog stations. The Wave Gateway line circuits have been certified in over 40 countries world wide. The Wave Gateway can also support Tadiran digital telephones. This is a practical alternative for existing



Coral sites migrating to the Sea Softswitch or new sites where infrastructure might favor digital telephones. The Wave Gateway is a scalable solution that can utilize certain existing Coral cabinets and cards. It is also offered in a new 2U chassis.



How tomorrow's organizations will be connected today



Tadiran America
 4 Tri Harbor Court
 Port Washington, NY 11050
 Tel 516-632-7200
 Fax 516-632-7210
 info@tadiranamerica.com

Government Systems
 1650 King Street, Suite 301
 Alexandria, VA 22314 USA
 Tel 703-739-4140
 Fax 703-739-4150
 Govt. inquiries: sales@tadiran-gov.com

Visit us at our website: www.tadiranamerica.com
 8-2006

Copyright © 2006 Tadiran Telecom Ltd. Specifications subject to change without notice. Contact your authorized dealer for specifics. Coral, FlexAir, Coral Message Center, Coral QNet, CorallITE, Coral FlexCT, Coral FlexiCom, Coral FlexSet, Coral FlexIP Softphone, Coral IPx and WiCMC are registered trademarks of Tadiran Telecom Ltd. or Tadiran Telecom Inc. All other products or services mentioned are the trademarks, service marks, registered trademarks or registered service marks of their respective owners.